

Product Finish: Chrome

Product code: AT1187-F4
EAN13 barcode: 5060344156134



Product features:

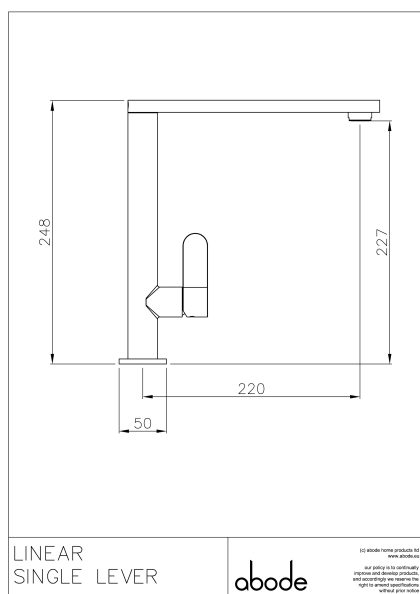
- Metal construction throughout
- Single lever control for effortless single handed control
- Flow Limited to 4 Litres per Minute
- Antisplash spout supplied as standard
- Supplied complete with flexible tail pipes for fast simple fitting

Additional information / Parts included:

Includes 2.5mm Allen key, 'std' neoperl aerator key & triangular stabiliser, 2 x 15mm mesh washers inserted into Flexi hoses after NRV's

Note: the image shown may not reflect the product finish, chrome finish is typically depicted.

Product dimensions:



- Overall Height / projection: 248 mm
- Exit reach: 220 mm
- Exit height: 227 mm
- Centre distance(s):

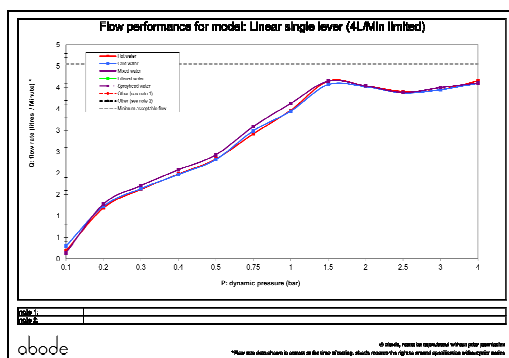
- Base diameter(s): 50 mm
- Recommended hole diameter: Ø 35 mm
- Max. surface depth: 55 mm

- Spout diameter: 30 x 12 mm
- Spout aerator size: 24m

Packaged properties:

Box length: 430mm Box depth: 70mm
Box width: 340mm Units per outer: tbc
Tap only weight: 1.91kg Boxed weight: 2.61kg

Product flow characteristics:



- Min / Max water pressure: 1.00 / 4 bar
- Recommended / Max water temperature: 46°C / 70°C
- Part G - Mixed flow rate at 3 bar (litres / min): 04.00

- Control valve type: Single lever ceramic cartridge
- Product flow characteristics: Single flow
- Non return valve(s): Hot & cold (integral to tails)

- Aerator type: Plastic mesh diffuser
- Accepts revolve / spray areator: No
- Spout connection method: Grub screw

- Tail pipe inlet / outlet size: M10 / 1/2" BSP Male
- Inlet pipe type / length: flexible stainless braided hose / 360 mm

Care instructions summary:

- Clean the mixers and showers regularly as required, using soap, do not use any other cleaners.
- Regular cleaning will prevent the build-up of lime scale and dirt
- After cleaning rinse thoroughly with clean water to remove any cleaner residue
- Residues of sink & worktop cleaners can also cause damage, so rinse with clean water after using, avoid contact with any abrasives

Warranty Summary (Full details available on request):

- Materials and workmanship defects warranted for 5 years
- Valves and working parts warranted for 5 years
- Surface warranty defects warranted for 1 year
- O-rings, hoses & gaskets warranted for 1 year